

# MONTHLY MEMBERSHIP PROGRESS REPORT

LOCATION MICHIGAN

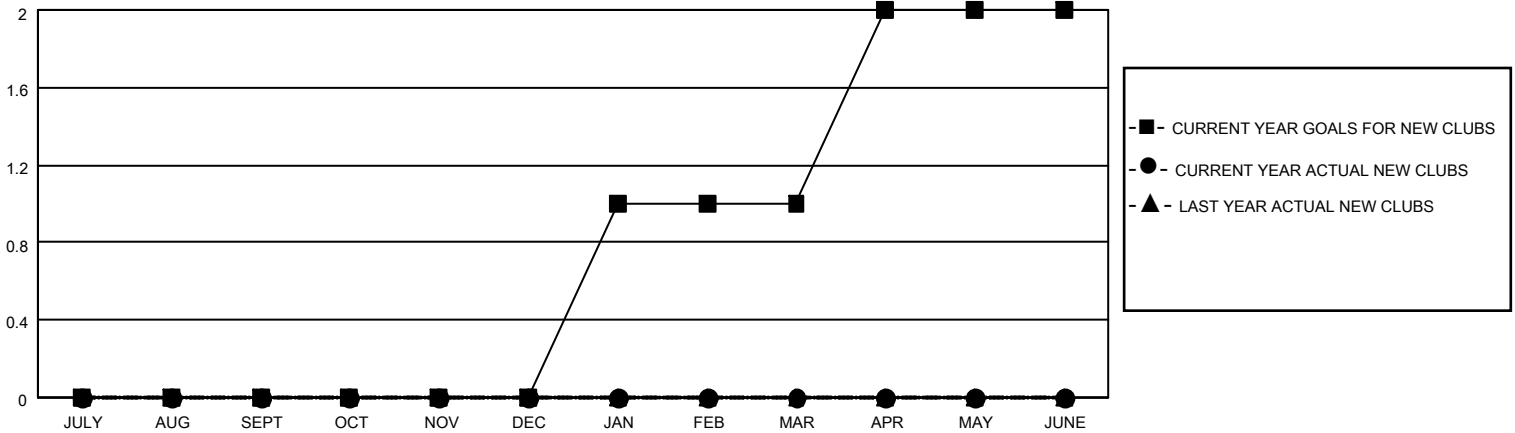
District 11 C1

Results as of: 11/30/2020

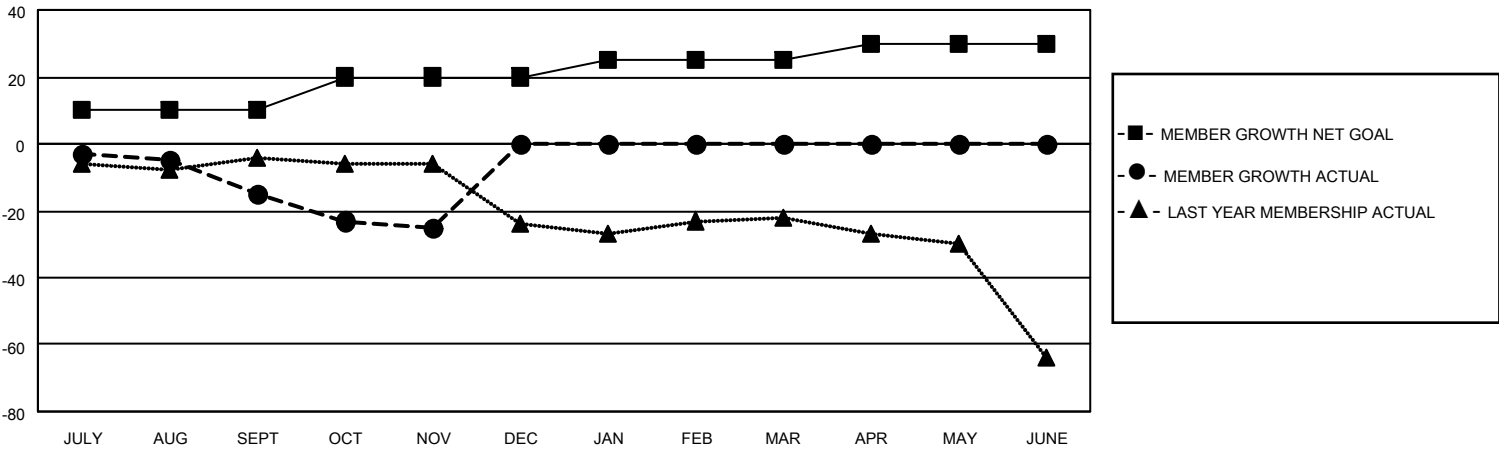
Clubs			
RESULTS FOR 2020-2021			
QUARTER	NEW CLUB GOAL	NEW CLUBS	DROPPED CLUBS
JULY/AUG/SEPT	0	0	0
OCT/NOV/DEC	0	0	0
JAN/FEB/MAR	1	0	0
APR/MAY/JUNE	1	0	0

Members			
RESULTS FOR 2020-2021			
QUARTER	MEMBER GROWTH NET GOAL	MEMBER GROWTH ACTUAL	DROPPED MEMBERS ACTUAL (including transfers)
JULY/AUG/SEPT	10	1	16
OCT/NOV/DEC	10	11	21
JAN/FEB/MAR	5	0	0
APR/MAY/JUNE	5	0	0

**GOALS AND ACTUAL NEW CLUBS CUMULATIVE**



**GOALS AND ACTUAL MEMBERS CUMULATIVE**



DROPPED CLUBS: 0	6 CLUBS OF 29 ADDED 1 OR MORE NEW MEMBERS	<u>GENDER DISTRIBUTION</u> MALE 489 (68.97%) FEMALE 220 (31.03%)
<u>DROPPED MEMBERS</u> DECEASED 5 CLUB CANCELLED 0 OTHER 32 <hr/> TOTAL 37	<a href="#">CLICK HERE FOR CUMULATIVE MEMBERSHIP DATA</a>	TOTAL FAMILY UNIT MEMBERS 130 FAMILY MEMBERS PAYING HALF DUES 66